

Kyoto University Research Administration Center

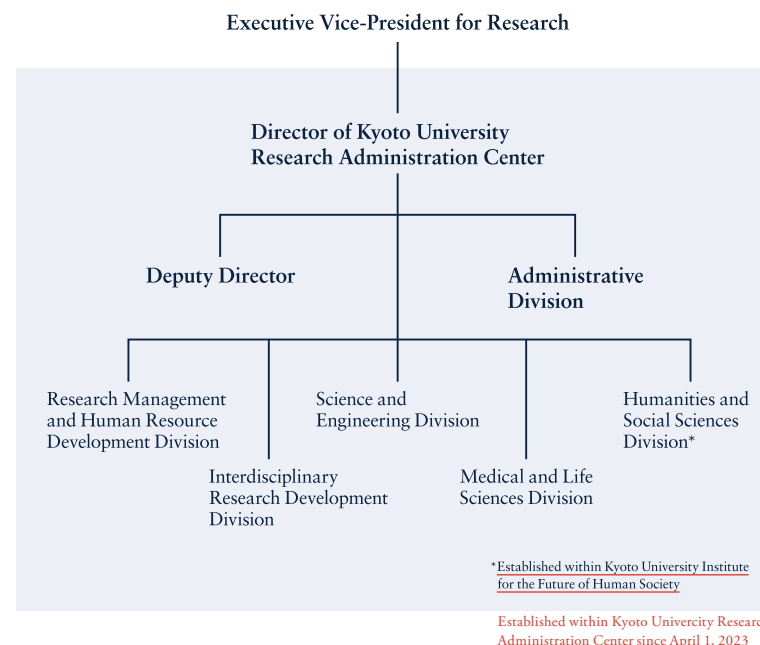
Enhancing Research Capabilities

Our Vision

Enhancing Kyoto University's outstanding knowledge-creation capabilities for academic and social advancement.

Organizational Structure

URAs provide support to individual scholars, plan, carry out, and advance research support measures on a university-wide level in an integrated, cross-sectoral, and flexible fashion.



Helping scholars acquire external funding

- We help scholars receive outside funding in a variety of ways. For example, we collect and share related information, polish up funding applications, help prepare for screening interviews, and provide assistance for forming research teams.
- We boast wide coverage that includes public, private and international funding opportunities, such as Grants-in-Aid for Scientific Research, CREST/PRESTO, AMED-CREST/PRIME, SATREPS, Core-to-Core Program, Horizon, NIH, research and educational project funding sources that require application via one's institution.



Designing and managing Kyoto University funding sources to strengthen research

- We design and manage Kyoto University funding sources that provide support to scholars' endeavors, such as the launching of projects that are international, interdisciplinary, or transcend existing research styles, as well as research enhancement. Examples of funding sources include SPIRITS, ISHIZUE, and the Cross-sectoral Research Platform Development Program.
- While taking into account the needs of society and members of the Kyoto University community, we design effective research support and

strengthening measures to promote the circulation of knowledge in a way that transcends spheres.



Promoting the internationalization of research

- We work to advance international joint research projects and relationships with research universities around the world. Also, we help strengthen Kyoto University's ability to send scholars overseas as well as take in scholars from overseas.
- We help scholars share their research findings in international venues, use overseas hubs, work to create opportunities for international joint research projects through international symposiums, provide support to scholars for acquiring overseas funding, operate Kyoto University-based international research funding sources, and offer support to scholars from overseas.



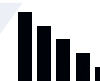
Advancing collaboration between industry, government, and academia

- We provide support for turning research seeds at Kyoto University into projects carried out in collaboration with industry, government, or academia.
- In cooperation with the Office of Society Academia Collaboration for Innovation, we serve as an innovation bridge between Kyoto University's creative research seeds and companies.



Facilitating communication between scholars and society

- Through the likes of Kyoto University Academic Day and other events, we promote engagement with the public in the form of scientific and technological dialogue.
- We help scholars share their research activities and findings with people both inside Japan and around the world.



Support for planning Kyoto University research strategies

- We collect and analyze data regarding the research abilities of Kyoto University and other universities inside and outside of Japan. Drawing from this, we contribute to the creation of evidence-based strategies for strengthening the research done at Kyoto University.
- We also provide information useful in this regard that is based on our surveys and analyses of science and technology policy trends in Japan.



Developing URAs' knowledge and skills

- We work to heighten the skills of URAs through the development and implementation of training programs and other endeavors.
- Both inside and outside Kyoto University, we share and put to use its know-how regarding the strengthening of research abilities.